



# Daily Learning Task 12

## Year 6

### Maths:

#### Focus: Percentages

What can you remember about finding percentages of amounts?

Remember: Percentage means 'out of 100' so work out how many parts of 100 the percentage is equal to and divide the number by that (e.g. to find 20% divide the number by 5 because there are five 20s in 100, to find 1% divide the number by 100 because there are one hundred 1s in 100))

Hint: to find 10% divide the number by 10, e.g. 10% of 80 = 8, use this to find other percentages (so 30% will be  $3 \times 10\%$  or  $3 \times 8 = 24$ )

To find 25% of a number divide it by 4

**Extra Tasks** - Can you create a step by step guide on how to complete percentage calculations?

#### Remember to visit Maths Flex

Your username is your 0092014AM (your initials) then your password is your unique 4 digits followed by your initials.

[https://www.activelearnprimary.co.uk/login?e=-1&c=0#bugclub\\_contextual](https://www.activelearnprimary.co.uk/login?e=-1&c=0#bugclub_contextual)

### English:

#### Text of the day: Winter Wonderland

Complete the comprehension task

**Extra Tasks** - Create your own 'Winter Wonderland' Poem; make a word bank of wintery adjectives before you start (you could use some from the poem such as 'crisp, gleaming, frozen, etc.)

#### Remember to visit Reading Plus

Your username is your first name and last name initial E.g. AnnaM and your password is your 4 digits

<https://student.readingplus.com/seereader/api/sec/login>

### Other:

#### Focus: Science

Our new science topic is the heart and the circulatory system. Can you research about the heart and its function in the body? Label the diagram of the heart with the words in the box (use Google to help you).

Ongoing tasks:

Reading Plus (see link above)

Maths Flex (see link above)

TT Rockstars <https://play.ttrockstars.com/auth/school/student>

Spelling Shed [https://www.edshed.com/en-gb/login?return\\_url=https%3A%2F%2Fwww.spellingshed.com%2Fen-gb%2F](https://www.edshed.com/en-gb/login?return_url=https%3A%2F%2Fwww.spellingshed.com%2Fen-gb%2F)

Useful links:

Joe Wicks exercise

<https://www.youtube.com/channel/UCAxW1XT0iEJo0TYIRfn6rYQ>

Purple Mash - Why not log on and play some games?

<https://www.purplemash.com/sch/beaumont>

Visit the YouTube link and watch some grammar videos - they are very catchy!

<https://www.youtube.com/channel/UCF3idoSaI6I-2bJcYtq4rvQ>

Relax your mind and body with some yoga!

<https://www.youtube.com/user/CosmicKidsYoga>

# Find Percentages of Quantities: 10%

70% of 70 = \_\_\_\_\_      90% of 30 = \_\_\_\_\_      10% of 970 = \_\_\_\_\_

10% of 20 = \_\_\_\_\_      40% of 130 = \_\_\_\_\_      30% of 440 = \_\_\_\_\_

80% of 20 = \_\_\_\_\_      10% of 140 = \_\_\_\_\_      20% of 390 = \_\_\_\_\_

80% of 60 = \_\_\_\_\_      30% of 80 = \_\_\_\_\_      10% of 420 = \_\_\_\_\_

50% of 80 = \_\_\_\_\_      60% of 160 = \_\_\_\_\_      40% of 760 = \_\_\_\_\_

80% of 40 = \_\_\_\_\_      40% of 100 = \_\_\_\_\_      90% of 930 = \_\_\_\_\_

60% of 100 = \_\_\_\_\_      40% of 180 = \_\_\_\_\_      30% of 390 = \_\_\_\_\_

40% of 20 = \_\_\_\_\_      40% of 110 = \_\_\_\_\_      90% of 580 = \_\_\_\_\_

20% of 10 = \_\_\_\_\_      60% of 60 = \_\_\_\_\_      60% of 180 = \_\_\_\_\_

# Find Percentages of Quantities: 25%

50% of 70 = \_\_\_\_\_      25% of 120 = \_\_\_\_\_      25% of 450 = \_\_\_\_\_

50% of 40 = \_\_\_\_\_      50% of 140 = \_\_\_\_\_      50% of 340 = \_\_\_\_\_

50% of 70 = \_\_\_\_\_      75% of 40 = \_\_\_\_\_      25% of 50 = \_\_\_\_\_

25% of 30 = \_\_\_\_\_      50% of 180 = \_\_\_\_\_      50% of 580 = \_\_\_\_\_

75% of 80 = \_\_\_\_\_      25% of 180 = \_\_\_\_\_      75% of 780 = \_\_\_\_\_

25% of 50 = \_\_\_\_\_      25% of 10 = \_\_\_\_\_      75% of 740 = \_\_\_\_\_

50% of 90 = \_\_\_\_\_      50% of 60 = \_\_\_\_\_      25% of 30 = \_\_\_\_\_

75% of 10 = \_\_\_\_\_      25% of 110 = \_\_\_\_\_      75% of 410 = \_\_\_\_\_

25% of 40 = \_\_\_\_\_      75% of 170 = \_\_\_\_\_      50% of 880 = \_\_\_\_\_

# Find Percentages of Quantities: 5%

$90\% \text{ of } 80 = \underline{\hspace{2cm}}$

$45\% \text{ of } 160 = \underline{\hspace{2cm}}$

$20\% \text{ of } 220 = \underline{\hspace{2cm}}$

$5\% \text{ of } 10 = \underline{\hspace{2cm}}$

$35\% \text{ of } 40 = \underline{\hspace{2cm}}$

$85\% \text{ of } 640 = \underline{\hspace{2cm}}$

$50\% \text{ of } 10 = \underline{\hspace{2cm}}$

$55\% \text{ of } 50 = \underline{\hspace{2cm}}$

$75\% \text{ of } 460 = \underline{\hspace{2cm}}$

$25\% \text{ of } 100 = \underline{\hspace{2cm}}$

$85\% \text{ of } 110 = \underline{\hspace{2cm}}$

$95\% \text{ of } 980 = \underline{\hspace{2cm}}$

$35\% \text{ of } 60 = \underline{\hspace{2cm}}$

$45\% \text{ of } 50 = \underline{\hspace{2cm}}$

$45\% \text{ of } 540 = \underline{\hspace{2cm}}$

$75\% \text{ of } 60 = \underline{\hspace{2cm}}$

$75\% \text{ of } 20 = \underline{\hspace{2cm}}$

$35\% \text{ of } 220 = \underline{\hspace{2cm}}$

$70\% \text{ of } 30 = \underline{\hspace{2cm}}$

$30\% \text{ of } 60 = \underline{\hspace{2cm}}$

$5\% \text{ of } 310 = \underline{\hspace{2cm}}$

# Winter Wonderland

Crisp underfoot, my feet sink down deep,  
As the white fluffy snow caves in.  
A crunch and a slip as I steady my grip,  
Let the wintry fun begin!

Icicles hang from the buildings above,  
Shining and gleaming like glass.  
Watery chimes that are frozen in time,  
Reflecting the sun as I pass.

Bushes and plants with a powdery coat,  
Shed puffs as a robin flies by.  
A flurry of snow hits the garden below,  
As the robin looks on from up high.

Snow starts to float through  
the bitter grey sky,  
A twirl as the lacy flakes fall.  
Meeting by chance for a fluttering dance,  
In a splendour of shapes big and small.

I look to the river that's frozen on top,  
The slippery ice stops the flow.  
A crack and a creak in the silence so bleak,  
Send a warning of danger below.

The laughter of children is soft in the air  
As snowballs exchange between friends.  
A snowman to make, a carrot to take,  
And a wish that the fun never ends.

My nose is now red, my fingers are numb,  
Jack Frost has been spreading his cold.  
So home I will head, to my warm cosy bed,  
And the fire, a sight to behold.



# Questions

1. In verse 1, how do you know that this snow is fresh or has not been walked on already?

---

---

2. Where could the robin be at the end of verse 3? Explain your answer.

---

---

3. In verse 4, what are snowflakes compared to? Why do you think the poet chose this comparison?

---

---

---

4. What is the 'danger below' in verse 5?

---

---

5. In verse 7, what is the double meaning of the line 'Jack Frost had been spreading his cold'?

---

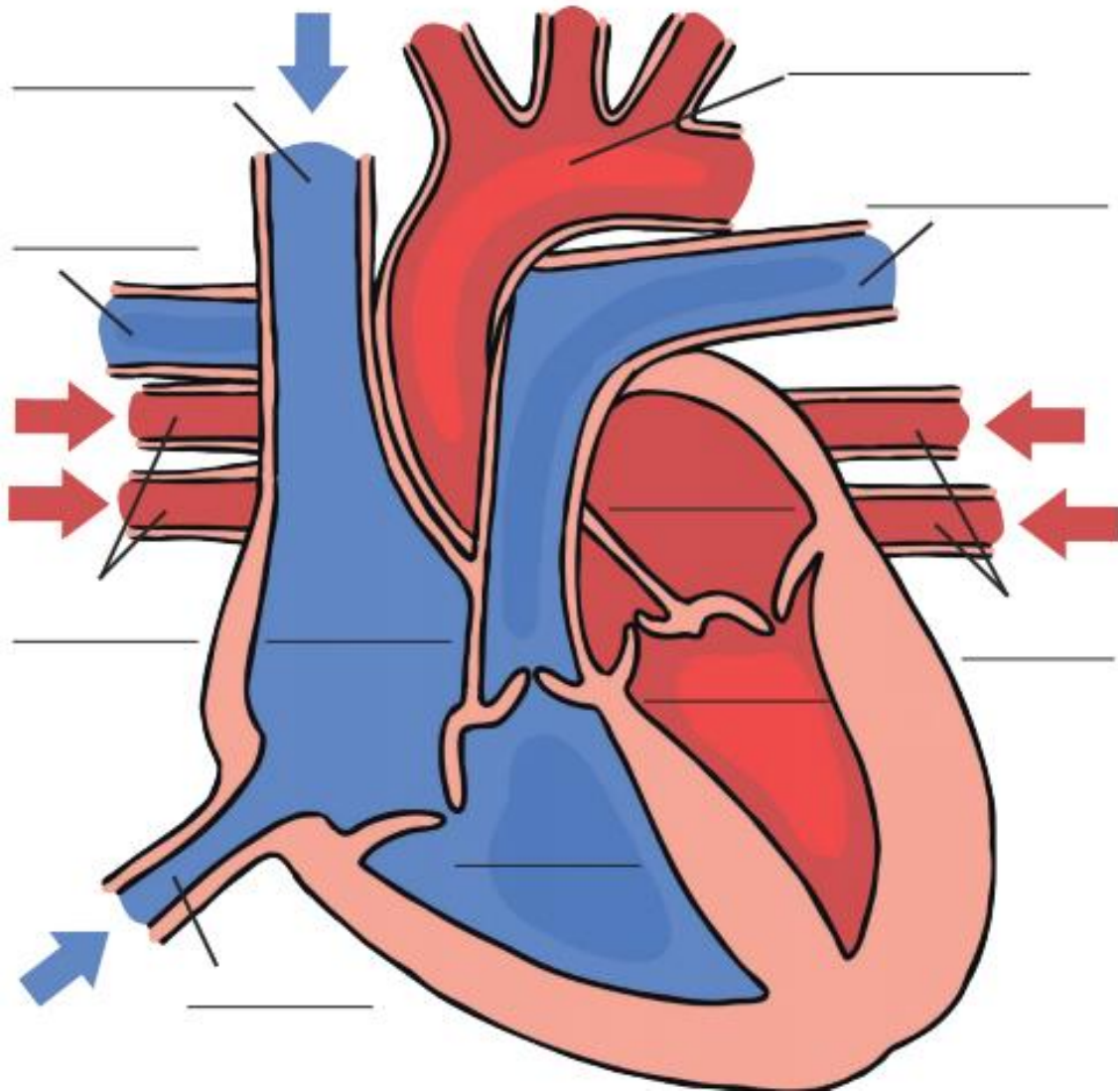
---

---

# The Heart

Deoxygenated blood from the body enters.

Oxygenated blood from the lungs enters the left atrium.



Inferior Vena Cava

Left Atrium

Left Pulmonary Veins

Superior Vena Cava

Right Atrium

Pulmonary Artery (Left)

Left Ventricle

Aorta

Pulmonary Artery (Right)

Right Ventricle

Right Pulmonary Veins